

KOMATSU®

NET HORSEPOWER
125 kW 168 HP @ 2.000 rpm

OPERATING WEIGHT
26.910 kg - 29.910 kg

MAX. HORIZONTAL REACH
18.250 mm

PC240LC-8

PC240NLC-8

Super Long Front specification

PC
240

HYDRAULIC EXCAVATOR



PC240LC/NLC-8

ecot3

WALK-AROUND

The PC240-8 is a rugged, productive, all-European machine. Designed and expressly built for European markets, it delivers outstanding productivity, reliability and operator comforts in a robust, environmentally friendly package. Komatsu's exclusive, on-board, HydrauMind system assists in all operations, providing enhanced machine performance that's always perfectly matched to the task.

Special Super Long Front features

- 18 m Super Long Front boom and arm
- Special counterweight for long reach working
- Suitable for digging work as well as slope finishing
- Maximum material density 1,8 ton/m³



Excellent reliability and durability

- Heavy-duty work equipment
- Reliable major components designed and built by Komatsu
- Exceptionally reliable electronic devices

Auxiliary hydraulic circuit

The PC240-8 Super Long Front can be specified with an auxiliary hydraulic circuit.

- Adjustable presets for rapid attachment changeover
- Additional filters for attachment and machine protection
- Hydraulic relief pressure control
- Automatic changeover valves

NET HORSEPOWER
125 kW 168 HP

OPERATING WEIGHT
26.910 kg - 29.910 kg

MAX. HORIZONTAL REACH
18.250 mm

New, safe SpaceCab™

Specifically developed for Komatsu excavators, the new cab is designed with a tubular steel frame. The framework provides high durability and impact resistance with very high impact absorbancy.

Low-noise cab

Operator ear noise is as low as an average passenger car.

Large TFT monitor

Improved operator interface through Komatsu-developed information technology. (TFT: Thin Film Transistor)



Komatsu Tracking System

Track and monitor your machine anytime, anywhere for total peace of mind.



The Komatsu SAA6D107E-1 engine meets EU Stage IIIA and EPA Tier III emission regulations.
29% NOx reduction.

SPECIFICATIONS



ENGINE

Model..... Komatsu SAA6D107E-1
 Type..... Common rail direct injection, water-cooled, emissionised, turbocharged, after-cooled diesel
 Rated capacity..... 125 kW/168 HP (ISO 9249 Net) at engine speed2.000 rpm
 No. of cylinders 6
 Bore x stroke 107 x 124 mm
 Displacement..... 6,69 ltr
 Battery 2 x 12 V/140 Ah
 Alternator..... 24 V/60 A
 Starter motor 24 V/5,5 kW
 Air filter type..... Double element type with monitor panel dust indicator and auto dust evacuator
 Cooling Suction type cooling fan with radiator fly screen



HYDRAULIC SYSTEM

Type..... HydrauMind. Closed-centre system with load sensing and pressure compensation valves
 Main pump.....2 variable displacement piston pumps supplying boom, arm, bucket, swing and travel circuits
 Additional circuits..... 1 additional circuit can be installed
 Maximum pump flow..... 2 x 219 ltr/min
 Relief valve settings
 Implement380 bar
 Travel.....380 bar
 Swing295 bar
 Pilot circuit.....33 bar
 Attachment circuit up to 190 bar



ENVIRONMENT

Engine emissions Fully complies with EU Stage IIIA and EPA Tier III exhaust emission regulations
 Noise levels
 LwA external 103 dB(A) (2000/14/EC Stage II)
 LpA operator ear 70 dB(A) (ISO 6369 dynamic test)



OPERATING WEIGHT (APPR.)

Operating weight, including Super Long Front boom and arm, 367 kg bucket, operator, lubricant, coolant, full fuel tank and the standard equipment.

SUPER LONG FRONT					SLF with auxiliary hydraulic circuit			
Triple grouser shoes	PC240LC-8		PC240NLC-8		PC240LC-8		PC240NLC-8	
	Operating weight	Ground pressure	Operating weight	Ground pressure	Operating weight	Ground pressure	Operating weight	Ground pressure
600 mm	27.610 kg	0,58 kg/cm ²	26.910 kg	0,61 kg/cm ²	29.010 kg	0,61 kg/cm ²	28.310 kg	0,64 kg/cm ²
700 mm	27.910 kg	0,50 kg/cm ²	27.210 kg	0,53 kg/cm ²	29.310 kg	0,52 kg/cm ²	28.610 kg	0,56 kg/cm ²
800 mm	28.210 kg	0,45 kg/cm ²			29.610 kg	0,47 kg/cm ²		
900 mm	28.510 kg	0,40 kg/cm ²			29.910 kg	0,42 kg/cm ²		



SWING SYSTEM

Type..... Axial piston motor driving through planetary double reduction gearbox
 Swing lock Electrically actuated wet multi-disc brake integrated into swing motor
 Swing speed 0 - 11,7 rpm
 Swing torque.....77 kNm
 Max. pressure 295 bar



DRIVES AND BRAKES

Steering control 2 levers with pedals giving full independent control of each track
 Drive method Hydrostatic
 Travel operation Automatic 3-speed selection
 Max. travel speeds
 Lo / Mi / Hi..... 3,0 / 4,1 / 5,5 km/h
 Maximum drawbar pull 20.570 kg
 Brake system..... Hydraulically operated discs in each travel motor



UNDERCARRIAGE

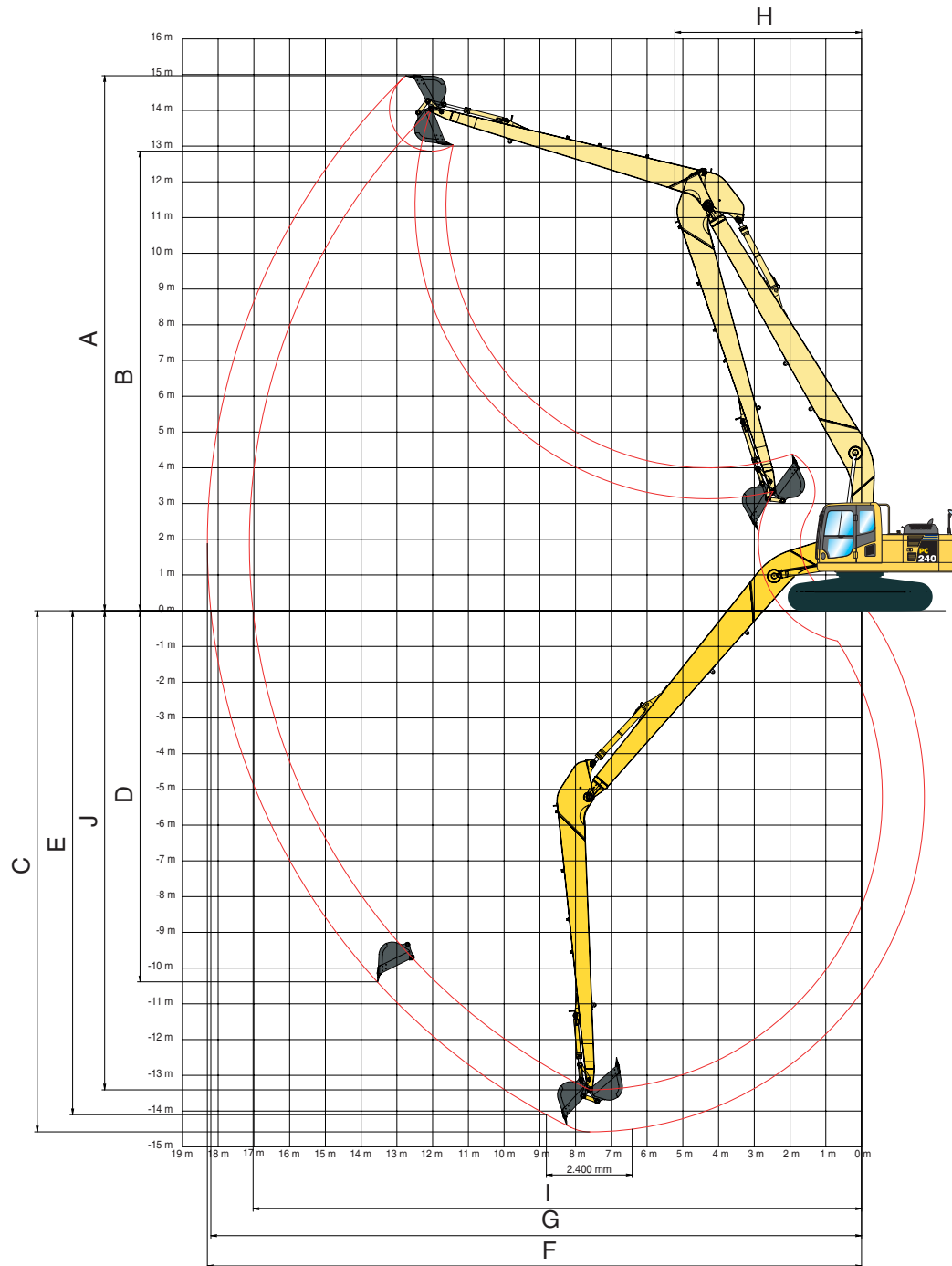
Construction X-frame centre section with box section track frames
 Track assembly
 Type..... Fully sealed
 Shoes (each side).....51 (PC240LC), 49 (PC240NLC)
 Tension..... Combined spring and hydraulic unit
 Rollers
 Track rollers (each side) 10 (PC240LC), 9 (PC240NLC)
 Carrier rollers (each side) 2



COOLANT AND LUBRICANT CAPACITY (REFILLING)

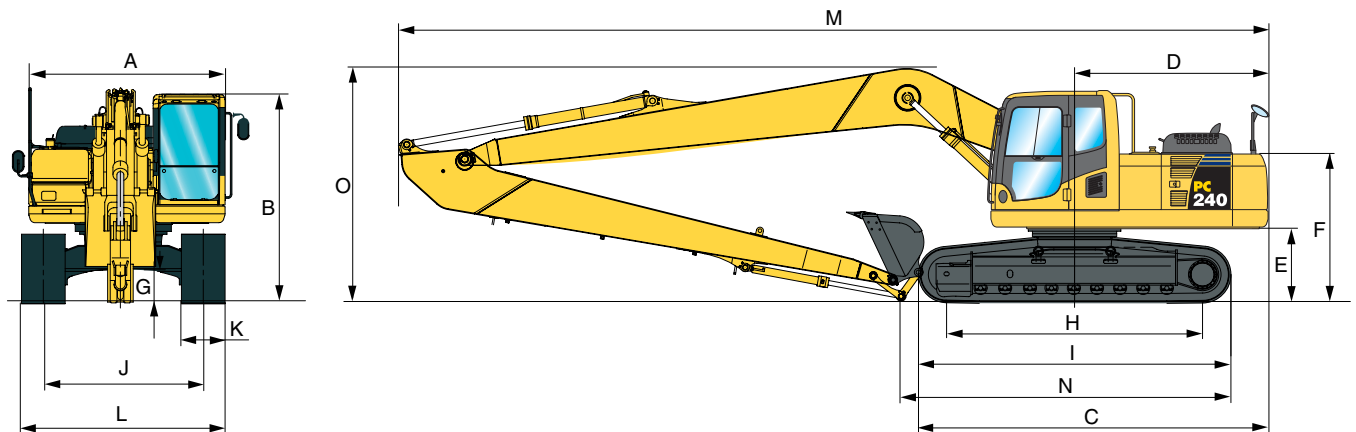
Fuel tank..... 400,0 ltr
 Radiator 20,4 ltr
 Engine oil..... 23,1 ltr
 Swing drive 6,6 ltr
 Hydraulic tank..... 135,0 ltr
 Final drive (each side) 3,3 ltr

WORKING RANGE



SUPER LONG FRONT		
A	Max. digging height	14.970 mm
B	Max. dumping height	12.860 mm
C	Max. digging depth	14.580 mm
D	Max. vertical wall digging depth	10.385 mm
E	Max. digging depth of cut for 2,44 m level	14.100 mm
F	Max. digging reach	18.300 mm
G	Max. digging reach at ground level	18.250 mm
H	Min. swing radius	5.220 mm
I	Max. pin reach at ground level	17.020 mm
J	Max. pin depth	13.405 mm

TRANSPORT DIMENSIONS



MACHINE DIMENSIONS		PC240LC-8	PC240NLC-8
A	Overall width of upper structure	2.710 mm	2.710 mm
B	Overall height of cab	3.055 mm	3.055 mm
C	Overall length of basic machine	5.225 mm	5.030 mm
D	Tail length	2.905 mm	2.905 mm
	Tail swing radius	2.940 mm	2.940 mm
E	Clearance under counterweight (not machines for powered attachments)	1.100 mm	1.100 mm
F	Machine tail height	2.405 mm	2.405 mm
G	Ground clearance	440 mm	440 mm
H	Tumbler centre distance	3.845 mm	3.655 mm
I	Track length	4.640 mm	4.450 mm
J	Track gauge	2.580 mm	2.380 mm
K	Track shoe width	600, 700, 800, 900 mm	600, 700, 800 mm
L	Overall track width with 500 mm shoe	3.180 mm	2.980 mm
	Overall track width with 600 mm shoe	3.280 mm	3.080 mm
	Overall track width with 700 mm shoe	3.380 mm	3.180 mm
	Overall track width with 900 mm shoe	3.480 mm	—
M	Transport length	14.400 mm	14.400 mm
N	Length on ground (transport)	4.520 mm	4.520 mm
O	Overall height (to top of boom)	3.230 mm	3.230 mm

PC240LC/NLC-8 18 m Super Long Front

RECOMMENDED BUCKETS				
Model	Material density	Ditching max. width	Standard width	Bucket volume
PC240LC-8	1,8 ton/m ³	2,1 m	0,75 m	0,47 m ³
PC240LC-8	1,1 ton/m ³	2,1 m	0,95 m	0,68 m ³
PC240NLC-8	1,8 ton/m ³	2,1 m	0,6 m	0,35 m ³
PC240NLC-8	1,1 ton/m ³	2,1 m	0,7 m	0,4 m ³

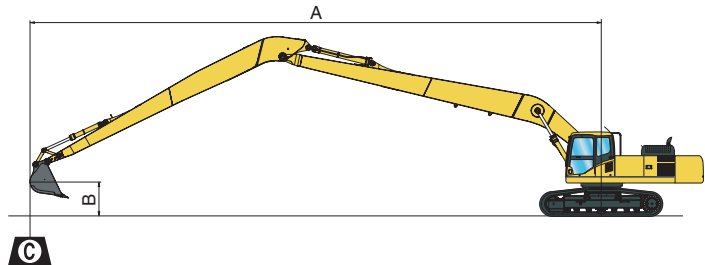
PC240LC/NLC-8 18 m Super Long Front (Machines with auxiliary hydraulic circuit)

RECOMMENDED ATTACHMENTS					
Mower			Weedcutter basket		
Weight	Flowrate	Pressure	Weight	Flowrate	Pressure
840 kg	150 ltr/min	190 kg/cm ²	840 kg	34 ltr/min	100 kg/cm ²

LIFTING CAPACITY

18 m SUPER LONG FRONT (Standard specification)

- A** - Reach from swing centre
B - Bucket hook height
F - Rating over front
S - Rating over side
MAX - Rating at maximum reach



PC240LC-8

700 mm shoes, 367 kg bucket

A	MAX		17 m		15 m		13 m		12 m		11 m		10 m		9 m		8 m		7 m		6 m	
B	F	S	F	S	F	S	F	S	F	S	F	S	F	S	F	S	F	S	F	S	F	S
14 m	900*	900*																				
10 m	850*	850*			1150*	1150*	1700*	1700*														
6 m	850*	850*	850*	850*	1900*	1600	2000*	2000*	2050*	2050*	2050*	2050*										
3 m	950*	950*	1350*	1050	2250*	1450	2400*	2000	2550*	2350	2700*	2700*	2900*	2900*	3100*	3100*	3400*	3400*	3800*	3800*		
0 m	1100*	900	1500*	950	2200	1300	2800	1700	3100*	2000	3350*	2300	3700*	2700	4150*	3200	4750*	3750	5600*	4550	6800*	5600
-3 m	1350*	900			2050	1150	2600	1500	2900	1750	3350	2000	3850	2300	4450	2700	5300	3200	6400	3850	8100	4750
-6 m	1800*	1050			2000	1100	2450	1400	2800	1600	3150	1850	3650	2150	4250	2500	5050	3000	6150	3600	7850	4550
-9 m	2350	1350					2500	1450	2800	1650	3200	1850	3700	2200	4250	2550	5100	3000	6250	3700	8000	4700
-13 m	3900*	2850													4000*	2900	4600*	3450	5300*	4200	6150*	5300

PC240NLC-8

600 mm shoes, 367 kg bucket

A	MAX		17 m		15 m		13 m		12 m		11 m		10 m		9 m		8 m		7 m		6 m	
B	F	S	F	S	F	S	F	S	F	S	F	S	F	S	F	S	F	S	F	S	F	S
14 m	900*	900*																				
10 m	850*	850*			1150*	1150*	1700*	1700*														
6 m	850*	850*	850*	850*	1900*	1400	2000*	1950	2050*	2050*	2050*	2050*										
3 m	950*	800	1350*	850	2100	1250	2400*	1700	2550*	2000	2700*	2400	2900*	2850	3100*	3100*	3400*	3400*	3800*	3800*		
0 m	1100*	700	1500	750	1900	1050	2450	1450	2850	1700	3250	2000	3700*	2300	4150*	2750	4750*	3250	5600*	3950	6800*	4850
-3 m	1350*	700			1750	950	2250	1250	2550	1450	2950	1650	3400	1950	3950	2300	4650	2700	5650	3250	7100	4000
-6 m	1600	800			1700	850	2150	1150	2450	1300	2750	1500	3200	1750	3700	2100	4450	2500	5400	3050	6850	3800
-9 m	2050	1100					2200	1150	2450	1350	2800	1550	3200	1800	3750	2100	4450	2500	5500	3100	7000	3950
-13 m	3900*	2450													4000*	2500	4600*	2950	5300*	3600	6150*	4550

Lifting capacity table is published for guidance only, the machine is not intended for use as a crane.

Lifting capacities are stated in kg, on the tip of the arm, for machine on firm, level supporting surface.

The weight of any attachment used should be deducted from the values shown, to calculate payload.

Indicated loads are based on ISO 10567 standard and do not exceed 75% of tipping or 87% of hydraulic capacity (indicated by *).

Lifting capacity of the machine is limited by machine stability, hydraulic capacity and maximum permissible load of the attachment.

HYDRAULIC EXCAVATOR

STANDARD EQUIPMENT

- Komatsu SAA6D107E-1, 125 kW turbocharged common rail direct injection diesel engine, EU Stage IIIA compliant
- Double element type air cleaner with dust indicator and auto dust evacuator
- Suction type cooling fan with radiator fly screen
- Automatic fuel line de-aeration
- Automatic engine warm-up system
- Engine overheat prevention system
- Fuel control dial
- Auto-deceleration function
- Engine key stop
- Alternator 24 V/60 A
- Batteries 2 × 12 V/140 Ah
- Starter motor 24 V/5,5 kW
- Electronic closed-centre load sensing (E-CLSS) hydraulic system (HydrauMind)
- Pump and engine mutual control (PEMC) system
- Multi-function video compatible colour monitor with equipment management monitoring system (EMMS) and efficiency guidance
- 5-working mode selection system; Power mode, economy mode, breaker mode, attachment mode and lifting mode
- PowerMax function
- One additional 2-way proportional service valve (full flow)
- Hydrostatic, 3-speed travel system with automatic shift and planetary gear type final drives, and hydraulic travel and parking brakes
- Adjustable PPC wrist control levers with 3 button controls for arm, boom, bucket and swing
- PPC control levers and pedals for steering and travel
- KOMTRAX™ Komatsu Tracking System
- Reinforced safety SpaceCab™; Highly pressurised and tightly sealed hyper viscous mounted cab with tinted safety glass windows, large roof window with sun shade, pull-up type front window with locking device, removable lower window, front window wiper with intermittent feature, sun roller blind, cigarette lighter, ashtray, luggage shelf, floor mat
- Heated air suspension seat with lumbar support, height adjustable arm rests and retractable seat belt
- Automatic climate control system
- 12 Volt power supply
- Beverage holder and magazine rack
- Hot and cool box
- Radio
- Overload warning device
- Electric horn
- Audible travel alarm
- Track roller guards
- Track frame under-guards
- Lockable fuel cap and covers
- Remote greasing for swing circle and pins
- Fuel supply pump
- Boom safety valves
- Large handrails, rear-view mirrors and counterweight mirror
- Toolkit and spare parts for first service
- Lights; 2 revolving frame lights and 1 boom light
- Engine ignition can be password secured on request
- Standard colour scheme and decals
- Parts book and operator manual
- Special counterweight for long reach working
- 18 m Super Long Front boom and arm, with bucket cylinder and arm cylinder and including piping and hoses for bucket cylinder and arm cylinder

OPTIONAL EQUIPMENT

- LC or NLC undercarriages
- 600, 700, 800, 900 mm triple grouser track-shoes (900 mm LC only)
- Full length track roller guards
- OPG Level II front guard (FOPS)
- OPG Level II top guard (FOPS)
- Service points
- Additional working lamps, including cab roof lights, r.h. boom lamp, counterweight rear lamp and beacon
- Bio oil
- Lower wiper
- Rain visor (not with OPG)
- Rear view camera system
- Customised paint
- “Weedcutter Specification”, including one additional hydraulic circuit, additional counterweight, control system. Only with 700 mm track-shoes if NLC undercarriage is specified

Call the experts

KOMATSU®

**Komatsu Europe
International NV**

Mechelsesteenweg 586
B-1800 VILVOORDE (BELGIUM)
Tel. +32-2-255 24 11
Fax +32-2-252 19 81
www.komatsueurope.com

UESS12100 08/2006

Materials and specifications are subject to change without notice.

KOMATSU® is a trademark of Komatsu Ltd. Japan.